

Read the entire instruction manual before you start installation and assembly.
If you have any questions regarding any of the instructions or warnings,
Please contact your local distributor for assistance.

MONITOR DESK MOUNT

CAUTION:

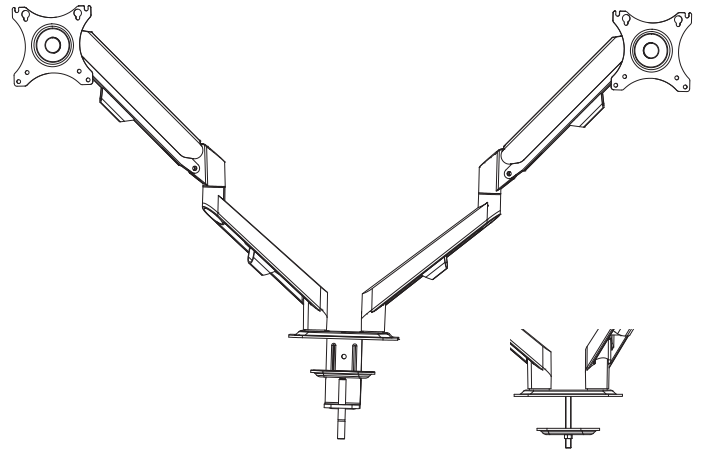
- Use with products heavier than the rated weights indicated may result in instability causing possible injury.
- 1. Mounts must be attached as specified in assembly instructions. Improper installation may result in damage or serious personal injury.
- 2. Safety gear and proper tools must be used. This product should only be installed by professionals.
- 3. Make sure that the supporting surface will safely support the combined weight of the equipment and all attached hardware and components.
- 4. Use the mounting screws provided and DO NOT OVER TIGHTEN mounting screws.
- 5. This product contains small items that could be a choking hazard if swallowed. Keep these items away from children.
- 6. This product is intended for indoor use only. Using this product outdoors could lead to product failure and personal injury.

IMPORTANT:

Ensure that you have received all parts according to the component checklist prior to installation. If any parts are missing or faulty, telephone your local distributor for a replacement.

MAINTENANCE:

Check that the bracket is secure and safe to use at regular intervals (at least every three months)



Model

CT-LCD-DSA1102



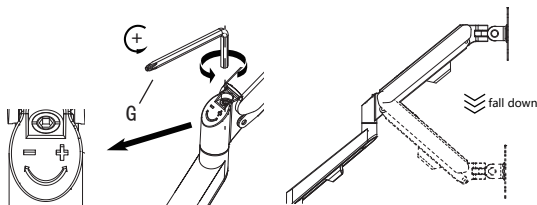
75x75/100x100



4

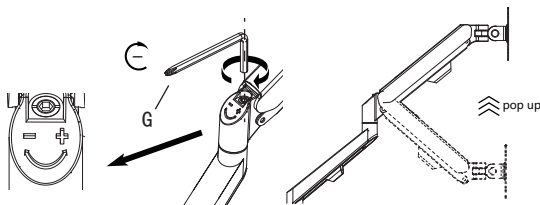
Case 1: Monitor/Arm fall down (after install your monitor)

Press the arm to make it keep it in horizontal position and then use the Allen Key to adjust the screw on the arm. Turn counter-clockwise(“+” direction) to increase gas spring tension till can hold the weight of your monitor.
Note: You may need to turn the screw by many circles to tighten the arm.



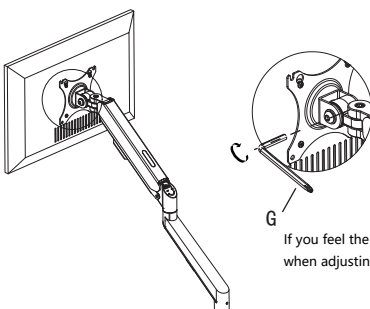
Case 2: Monitor/Arm pops up (after install your monitor)

Press the arm to make it keep it in horizontal position and then use the Allen Key to adjust the screw on the arm. Turn clockwise(“-” direction) to reduce gas spring tension till can stay the position needed.
Note: You may need to turn the screw by many circles to tighten the arm.



5

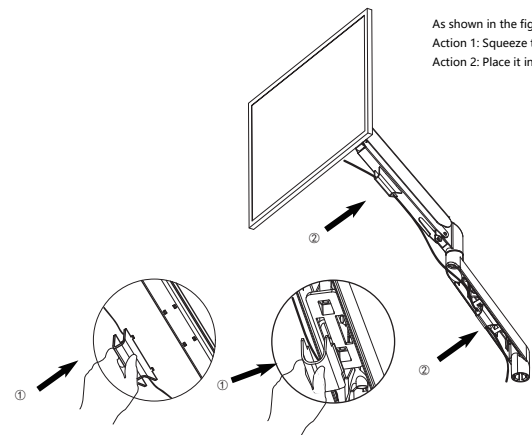
Adjust flexibility



If you feel the pitching angle too tight or too loose when adjusting the mount, please adjust the Screw

6

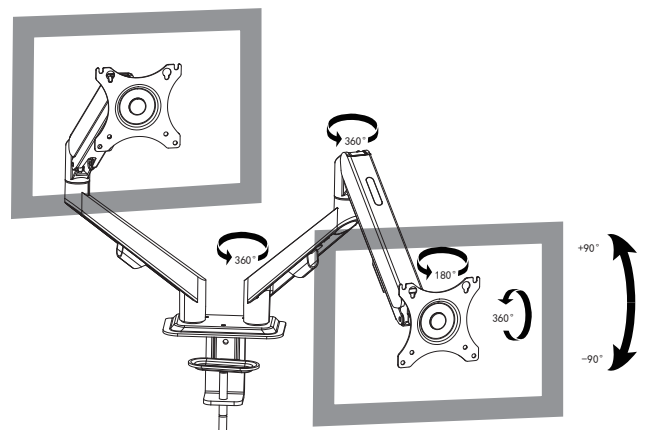
Cable management

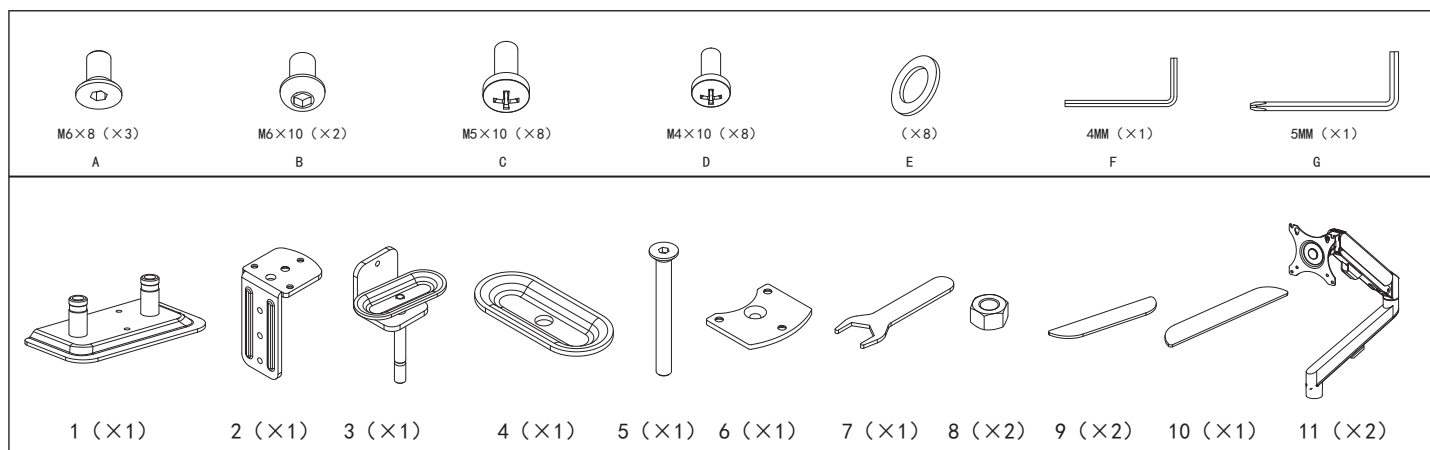


As shown in the figure
Action 1: Squeeze the buckle inward.
Action 2: Place it into the hole site.

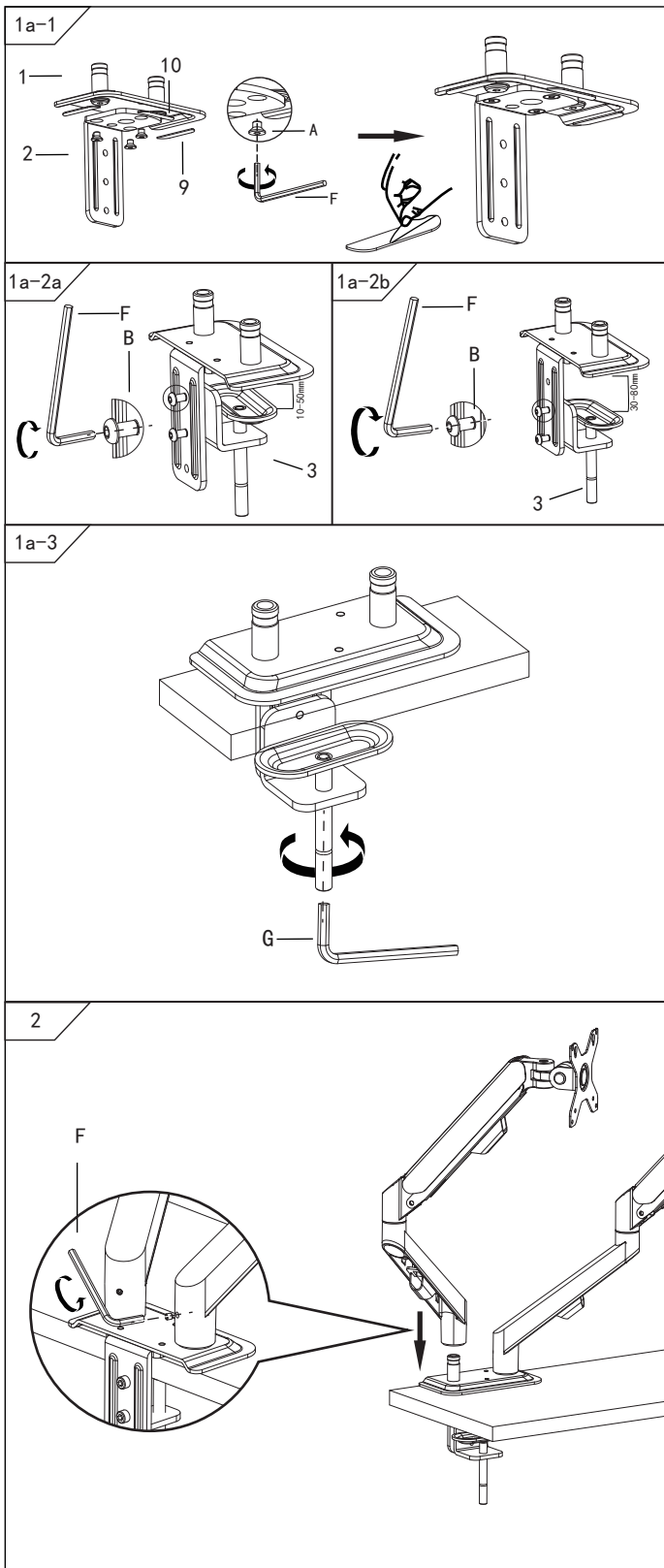
7

Adjustable instruction





Method 1



Method 2 (desktop has a hole for item 2 go through)

